



Onguma

ETOSHA | NAMIBIA

WEDDINGS AT ONGUMA

Onguma Nature Reserve consists of 34 000 ha of magnificent Namibian wilderness, overlooking the world famous Etosha National Park.

Onguma is sensual and emotive, making it the perfect location for weddings and special celebrations. With spaces designed to enthrall and staff trained to 'create magic', what better place to create memories that will last a lifetime.

	THE FORT	TENTED CAMP	TREE TOP	BUSH CAMP	ETOSHA AOB	CAMPsites
Rooms	13	7	4	18	11	Leadwood – 6 Tamboti – 15
Children	No under 7	No under 12	No under 12	All ages	No under 7	All ages
Family Rooms	0	0	0	3 + 3 loft rooms	3	0
Swimming pool	Yes	Yes	No	Yes	Yes	Yes
Air Conditioning	Yes	No	No	Yes	Yes	N/A
Room Fans	No	Yes	Yes	No	No	N/A
Mosquito Nets	Yes	Yes	Yes	Yes	Yes	N/A
Outside Shower	Yes	Yes	Yes	No	Honeymoon Bungalow only	N/A
Free WIFI	Yes	Yes	Yes	Yes	Yes	At main lodge & restaurant
In room safe	Yes	Yes	Yes	Yes	Yes	N/A
Personal bars	Yes	Yes	No	No	Yes	N/A
Telephone	Yes – internal use only	No	No	No	No	N/A
Laundry	Available at additional cost					
Hairdryers	Yes	Yes	Yes	Yes	Available at reception	N/A
Guests per game drive	6	6	9	9	9	9
Power	Standard electricity with backup generator					
Credit Cards	Mastercard and Visa					



MERAKI PHOTOGRAPHY (2)



MERAKI PHOTOGRAPHY

WEDDING ARRANGEMENTS: We love weddings and think Onguma is the ideal location for a spectacular bush wedding. Special drink stops and bush events can be arranged for an additional fee. Similarly, flowers, sound equipment, lights and décor items will also need to be hired at an additional fee. Please note that we can only have a wedding in a camp if you book out the whole camp.

RATE BASIS: Fully Inclusive (FI) – includes accommodation, Breakfast, Lunch, High Tea, Dinner (4-course), Beverages – Bar and Mini Bar (beers, local spirits, soft drinks, water and house wines), Etosha Morning Drive and Onguma Sundowner Drive (on Onguma Reserve). Transfer from and to the Onguma airstrip, VAT, Hai//om levy and NTB tourism levy.

Most rate packages are quoted on a Dinner, Bed and Breakfast basis, and lunch can be provided. We offer breakfast and lunch packs and will happily arrange these if you will be out exploring the Park during the day. All extra meals at an additional fee.

LOCATION: Onguma Nature Reserve consists of 34 000 ha of magnificent Namibian wilderness, overlooking the world famous Etosha National Park.

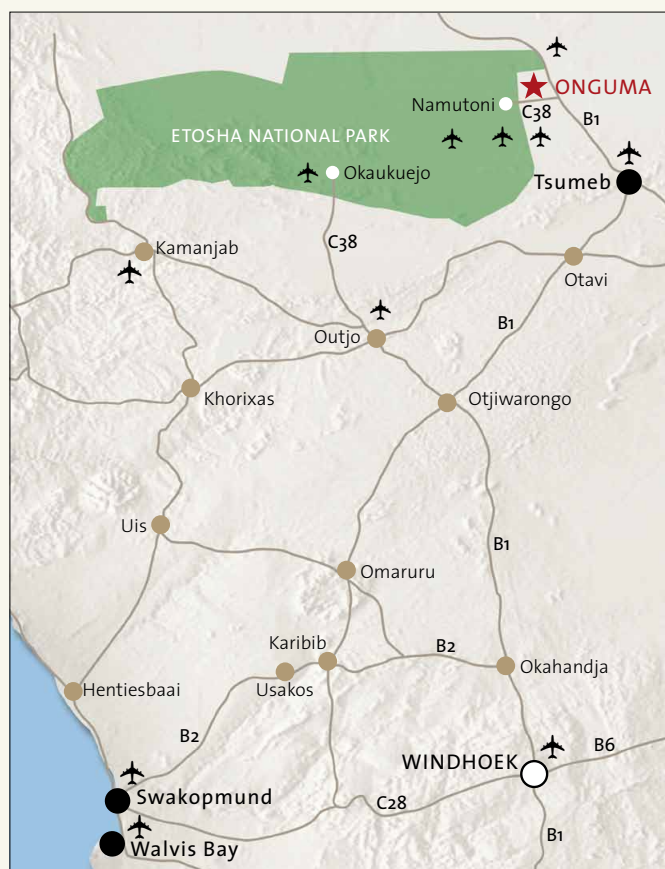
ACCESS: Coming from the east, follow the B1 direction North/ Etosha, turn left onto C38 and you will reach the Lodge after 25 km directly to the right hand side of the Etosha Gate. Then just follow the signs for 13 km along a natural bush road and you will find the lodge.

Coming from the west you will leave Etosha at von Lindequist Gate. You immediately turn left and follow the signs. You will find the lodge after 13 km of natural bush road.

ACTIVITIES: Onguma offers a variety of game activities both in the Etosha National Park and in Onguma Nature Reserve. They include photographic hide, guided interpretive walks, sunset drives in the Onguma Reserve and Etosha guided safaris.

GAME VIEWING: Our nature reserve boasts over thirty different animal species consisting of plains game including kudu, giraffe, eland, oryx, hartebeest, zebra, impala and many more roam freely as well as predators such as lion, cheetah, leopard, being common residents of the area.

The latest addition to the already abundant wildlife at Onguma Nature Reserve is a family of black rhinos. More than 300 bird species can also be viewed at the reserve. During the Namibian



summer months Onguma becomes a bird-watcher's paradise with thousands of species migrating to the wetlands created by the seasonal rains and ephemeral river systems.

ARRIVAL & DEPARTURE: We request that you check out by 10.00am to allow us to prepare the room for new arrivals. Arrival time is from 1.00pm onwards, so we can be sure to have your room ready for you. Should you need a late check out, please arrange with the lodge and this will be accommodated if at all possible.

CHILDREN: Bush Camp is best suited for accommodating children as it has great family and loft rooms. The lodge is fenced, adding peace of mind to weary parents. A great open pool area ensures safe play and lovely lawns provide ample space to run around and expend excess energy. There is also an equipped games room for older children.

ACCOMMODATION

The Reserve offers visitors 5 unique lodges to choose from in addition to two well equipped campsites.



ONGUMA - THE FORT 11 Bush Suites, 1 Sultan Suite (78.5 m² + outside deck 21 m²) & 1 Honeymoon Suite (69.25 m² + outside deck 44 m²)

This Fort is unlike any other, the only one of its kind, with probably one of the best sunset views in Namibia. Overlooking the beautiful Etosha Fisher's Pan, accommodation consists of eleven Bush Suites, one Honeymoon Suite as well as a Sultan Suite. The Bush and Honeymoon Suites are equipped with fire places for the winter

months and air coolers for the summer months. Each Bush and Honeymoon Suite has an indoor and outdoor shower and views that will enchant. With dramatic Moroccan details, there is something new to discover around every corner.

Onguma The Fort: S 18°44'18.4" E 17°02'36.5"



ONGUMA TENTED CAMP 7 Luxury Tents

Accommodation consists of a fourteen bed tented camp, built around an active waterhole. The seven spacious tents extend the u-shaped design, allowing for both privacy and fantastic views.

Every comfort is attended to and the bush-chic styling ensures guests are cocooned in luxury. Under-canvas romance abounds. Onguma Tented Camp: S 18°42'59.8" E 17°02'48.7"



ONGUMA TREE TOP CAMP 4 Thatched rooms on stilts

Onguma Tree Top Camp is a small and intimate camp, designed for those travellers who would like to truly experience the bush in all its raw splendour. The camp is built on wooden stilts amongst the tree tops with full views over one of the most beautiful waterholes

on Onguma Nature Reserve. The Camp consists of only 4 thatched rooms with canvas walls, a dining room in the main complex. Ideal for exclusive-use and small parties travelling together.

Onguma Tree Top Camp: S 18°42'06.80" E 17°02'37.11"



ONGUMA BUSH CAMP 18 Rooms and Family Suites

Onguma Bush Camp offers 18 rooms and is ideal for families with children. Family loft rooms ensure the kids will have a great safari. The lounge and dining areas overlook a stunning waterhole that affords great opportunities to see nature at play around the clock. You don't even have to leave the camp to see game – it comes to you! Onguma Bush Camp consists of 8 twin bedded standard rooms

which includes 3 rooms with a children's sleep area in the loft, 6 twin bedded Waterhole/Pool-View Rooms, 1 family unit with 4 beds, 1 Settler's Room (formerly the honeymoon suite) as well as 2 single tour guide rooms. A small games room for children, further increases the versatility of this much loved camp.

Onguma Bush Camp: S 18°43'59.7" E 17°02'55"



ETOSHA AOBA LODGE 11 Bungalows

Etosha Aoba is the perfect lodge to unwind after a full day of activities. With delicious meals under the stars and an impressive wine cellar to compliment your meal, you can't ask for more. The lodge offers 3 family units and even a Honeymoon Bungalow with a romantic outside bath. The waterhole ensures there is always some game activity to catch your eye, even while you cool off in the pool. The lodge consists of four free standing Heritage Bungalows with

air-conditioning, three Bush Suites that each have two rooms with an inter-leading bathroom that can accommodate 4 adults. Three new Explorer Bungalows have been added and each boast privacy and seclusion. We have a Honeymoon Bungalow that is extremely private and secluded that has a lovely double hammock in the trees and both an outdoor shower and bath!

Etosha Aoba Lodge: S 18°45'26.62" E 17°05'56.03"



CAMPING: TAMBOTI & LEADWOOD

Tamboti – 15 campsites

Leadwood (the original campsite near Bush Camp) – 6 campsites

TAMBOTI CAMPSITE Luxury camping at its best! Private sites, private shower room and separate toilets as well as ample washing-up space. Plugs ensure cameras and iPads are always charged. And if you don't feel like making a fire – enjoy a hearty meal at the restaurant overlooking the waterhole. The campsite is serviced daily, assuring you a hassle-free stay. Guests are not allowed to take their own vehicles onto the 34 000 hectare Onguma Reserve, but game-drives, sunset drives and interactive walks can all be booked at reception. Tamboti Campsite: S 18°46'55.3" E 17°03'36.2"

LEADWOOD CAMPSITE Private and shaded sites are ideal for the Etosha camper. Book all six sites and have this charming campsite to yourself. Each has a private ablution facility and Onguma Bush Camp facilities are available. Each campsite has been thoughtfully positioned and has its own shower, toilet and power point. The campsite is serviced on a daily basis assuring you a hassle-free stay.

Leadwood Campsite: 18°46'55.16" S 17°03'36.08" E