



ONGUMA CAMP KALA FACT SHEET

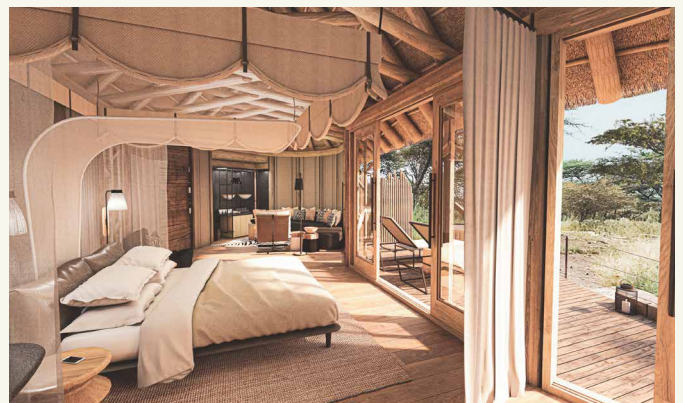
Elevated on wooden decks, with panoramic views over one of Onguma’s most beautiful waterholes is the new Onguma Camp Kala. With its conical, mud plastered central tower resembling a termite mound and the whole camp elevated on wooden stilts – it is set to raise the benchmark to a whole new level.

The thatched camp is centered around game viewing with numerous vantage points to take it all in – be it the comfortable lounge, the intimate cocktail bar or the beautiful deck, which is sunny by day and warmed by a fire pit at night. The dining area has an open plan ‘show’ kitchen and all-day pantry to ensure everyone feels right at home. For guests who want to be more active there is a gym, whilst those who want to relax, can while away the hours in comfort in the ground-level photographic hide, enjoy a spa treatment or practice yogo on the yoga deck.

It doesn’t get much more exclusive than this. Camp Kala consists of just four guest Suites, linked by raised walkways, and although the lodge is perfect for exclusive use for 8 to 12 guests, the 4 suites can also be booked individually. Spacious and private, the open-plan suites have sumptuous twin or king-sized beds with a state-of-the-art air-cooling system. The comfortable seating area is equipped with a fully stocked personal bar. A hand stitched curtain separates the beautiful bathroom with bespoke double vanities, full-size bathtub and generous shower from the bed area.

Each suite has its own deck with plunge pool, outdoor shower and wood-fired hot tub. There is a walkway to the private, shaded sala with a king-size outdoor day bed – perfectly placed for an armchair safari or to ‘sleep out’ under the stars.

FAST FACTS			
GPS Coordinates	S 18°42’06.80” E 17°02’37.11”	Swimming Pool	Wood-fired hot tub per Suite
Suites	4	Free Wifi	Yes
Configuration	Twin / King	Air Conditioning	Yes
Maximum Guests/Occupancy	8 (up to 12 if exclusive use)	Mosquito Nets	Yes
Children	No under 12	Outside Shower	Yes
Extra Beds	1 per room on exclusive use	Bath	Yes
Personal Bar	Yes	Nespresso/Tea/Coffee	Yes
In-room Safe	Yes	Hairdryers	Yes
Private Dinners	Yes	Laundry	Yes
Guests per Game Drive	6	Spa	Yes
Cellphone Coverage	Yes	Check-in/Check-out Times	14:00/10:00
Power	Standard Electricity with backup generator	Credit Cards	Mastercard and Visa





ACCESS BY AIR

Private Charter to Onguma Airfield.

Private Charter to Mokuti Airstrip – Transfer fee of N\$1200 per vehicle.

ACCESS BY ROAD

Coming from southern Namibia, follow the B1 direction North/ Etosha. Turn left onto the C38. After 25km you will reach Onguma Nature Reserve's entrance on the right-hand side, just before Etosha's Namutoni entrance gate. Follow the signs to Camp Kala. Approx 20 minutes on dirt road.

Coming from western Namibia you will leave Etosha at the von Lindequist Gate, Namutoni. Turn left almost immediately at the entrance to Onguma Nature Reserve. Follow the signs to Camp Kala. Approx 20 minutes on dirt road.

ACTIVITIES

Dream Cruiser	Yes Supplement applicable	Afternoon Sundowner Drive	Yes
Guided Interpretive Bush Walks	Yes	Mid-morning Onkolo Hide	Yes
Etosha Morning Game Drive	Yes	Etosha Afternoon Game Drive	Yes
Private Vehicles (Full Day)	On request Supplement applicable	Private Activity	On request Supplement applicable

CONSERVATION & SUSTAINABILITY

Conservation and sustainability are important to us at Onguma and Camp Kala is no different. At Camp Kala:

- we do not use single-use plastics,
- our Nespresso machine capsules are 100% biodegradable, and
- all our glass is crushed and used as sand for building materials.

RHINO LEVY

This is compulsory and is utilised exclusively to guard and protect our rhino population on the reserve.

ONGUMA ANTI-POACHING UNIT (APU)

The biggest threat our wildlife currently faces, is poaching. We have seen an increase in the sophistication of the methods used by poachers. We are up against highly progressive criminal networks and have therefore reacted with radical counter poaching initiatives to combat the crisis. As a result, we now have a well-trained,

fully equipped Anti-Poaching Unit patrolling our 34 000 ha private nature reserve day and night.

To keep our rangers safe and to allow them to do the best job possible at tracking down and apprehending poachers, they need to be equipped with the best tools and technology for the job.

Visiting Onguma is not only about experiencing wildlife in a natural environment, but more importantly it is about helping to protect it.

SOCIAL RESPONSIBILITY & SUSTAINABILITY

Through the vision of the Founder and Chairman of Onguma, strategic plans were made to ensure the ongoing sustainability of the Onguma Nature Reserve to the benefit of the local community. Along with several other important factors, he foresaw that the major threat to sustainability would be hunger.

Onguma, in association with local farmers Jan and Lizette Cronje founded **Oshivelo Farming** in August 2012, to create jobs on a large scale for the Oshivelo community. Oshivelo Farming currently employs 180 previously unemployed local people on a permanent basis, of which 80% are women. Up to 100 additional people are also employed seasonally.

Oshivelo Farming produces carrots year-round, beetroot, onions, tomatoes, bell peppers, cabbage, maize, butternut and broccoli as well as papayas. Four hundred tons of vegetables are currently sold monthly into the Namibian market. Clients range from Onguma and informal traders through an outlet at Oshivelo, to major supermarket groups like Woolworths, Spar, Checkers and Food Lovers Market.

RATE

Rate (per person sharing)	1 Nov 2022 – 31 October 2023
Fully Inclusive	N\$ 13,000
Single Supplement	N\$ 8,000
Rhino Levy	N\$ 150

Fully Inclusive:

Includes accommodation, breakfast, lunch, afternoon tea, dinner (4-course) and beverages (bar and personal bar – beers, local spirits, soft drinks, water and house wines).

2 Activities per night stayed – Sundowner Drive (on Onguma Reserve) and Etosha Morning Game Drive.

Other activities are available subject to time restrictions and availability.

Transfer from and to the Onguma airstrip, VAT, Social Development Levy and NTB tourism levy.

Excludes: Rhino Levy, Mokuti Airfield Transfers, Massage Treatments, Auction Wines, Champagne and Safari Shop Purchases.